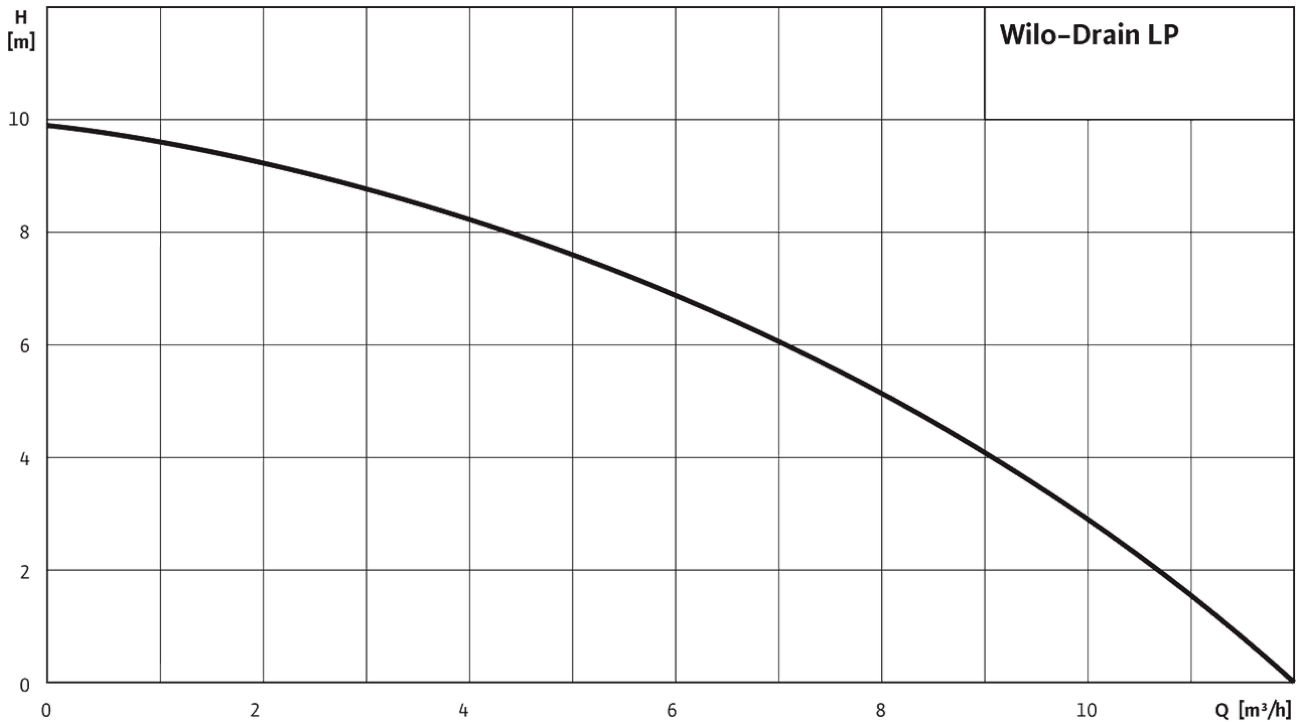




Your advantages

- > Simple operation due to the extensive scope of delivery



Construction

Self-priming drainage pump with standard motor for dry well installation

Application

Pumping of

- > Wastewater
- > Process water
- > Sea water

Equipment/function

NO VALUE

Scope of delivery

- > Pump
- > 2 x counter flanges with G 1½ female thread
- > Installation and operating instructions

Type key

Example:	Wilo-Drain LP 40/10
LP	Self-priming pump
40	Nominal diameter (1½")
10	Maximum delivery head in m

Technical data

- > Mains connection: 1~230 V, 50 Hz
- > Protection class: IP44
- > Fluid temperature: 3 ... 35 °C
- > Suction and pressure connection: Rp 1½
- > Max. suction head: 6 m

Materials

- > Pump housing: PP
- > Impeller: Brass
- > Shaft: 1.4006
- > Mechanical seal: C/Cr
- > Static gaskets: NBR
- > Motor housing: Al

Description/construction

Self-priming centrifugal pump in monobloc design for portable and stationary dry well installation, not submersible.

Hydraulics with a horizontal suction connection and a vertical pressure connection. Vortex impellers are the impeller type used. Drive is provided by a standard motor. The hydraulics and motor have a common shaft. Stable installation is carried out using a low-vibration baseplate.

Data sheet

Hydraulic data

Maximum operating pressure P_N	7 bar
Impeller type	Open single-channel impeller
Free ball passage of the hydraulics	5 mm
Max. volume flow Q_{max}	11,9 m ³ /h
Max. delivery head H_{max}	9,9 m
Min. fluid temperature T_{min}	3 °C
Max. fluid temperature T_{max}	35 °C
Min. ambient temperature T_{min}	3 °C
Max. ambient temperature T_{max}	35 °C

Motor data

Mains connection	1~230 V, 50 Hz
Voltage tolerance	±10 %
Rated power P_2	0,4 kW
Rated current I_N	2,3 A
Rated speed n	2900 1/min
Power consumption $P_{1 max}$	550 W
Max. switching frequency t	50 1/h
Activation type	Direct online (DOL)
Insulation class	B
Protection class motor	IP44

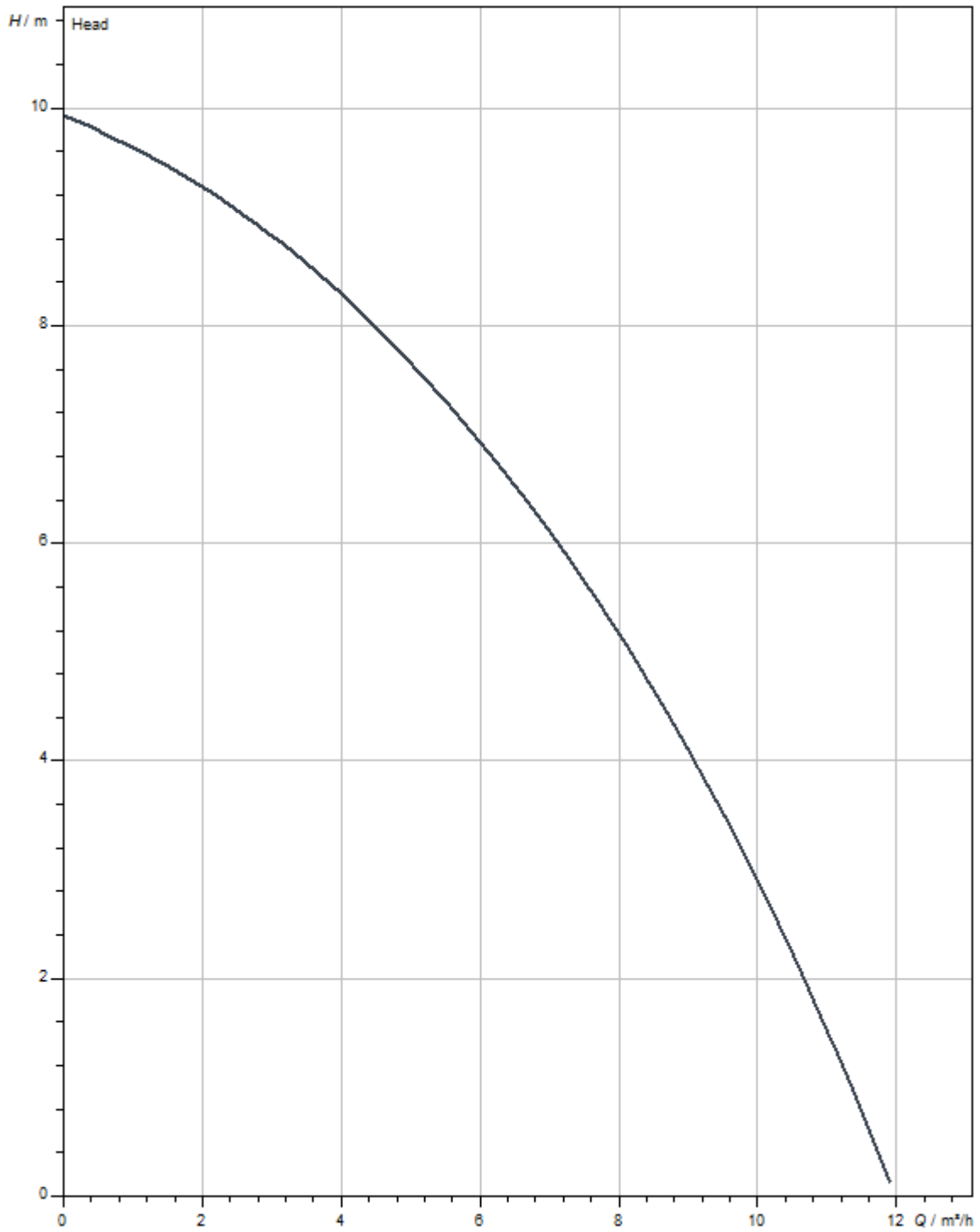
Materials

Pump housing	PP
Impeller	Brass
Shaft	Stainless steel
Shaft seal	BXPFF
Gasket material	NBR
Motor housing	5.1301/EN-GJL-250 KTL-coated

Installation dimensions

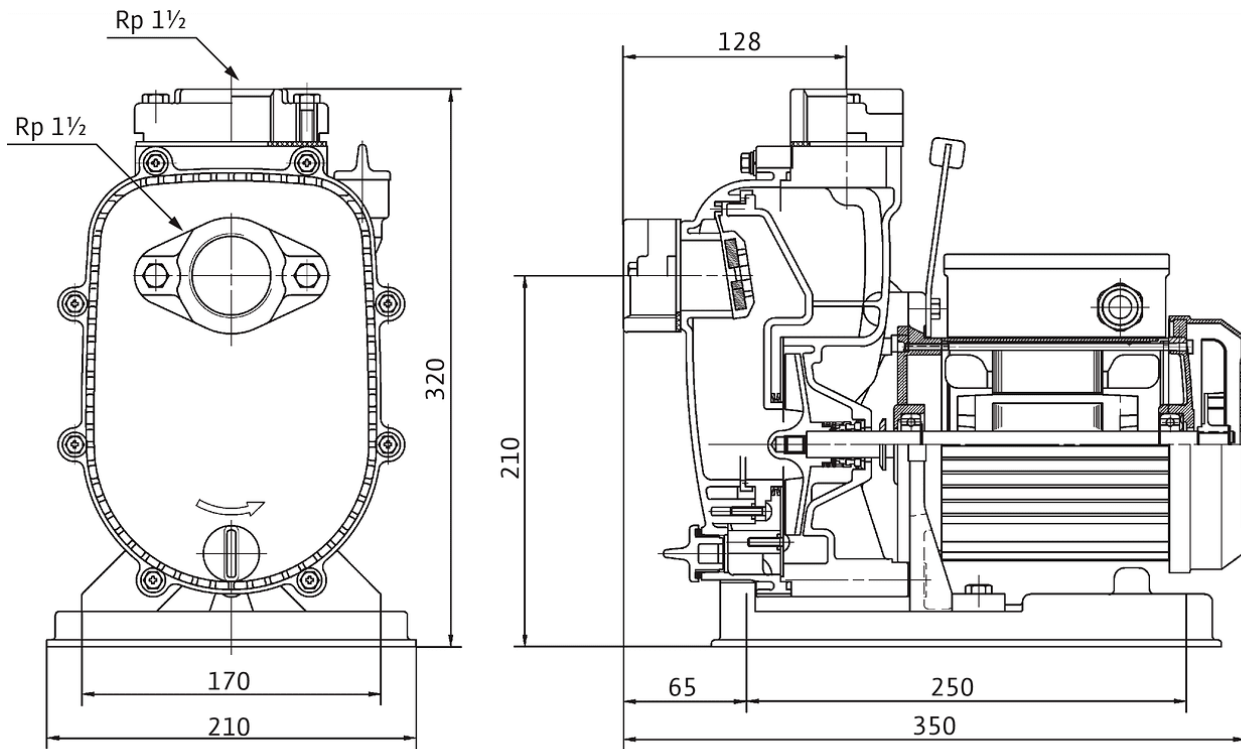
Pipe connection on the suction side DNs	Rp 1½
Pipe connection on the pressure side DNd	Rp 1½

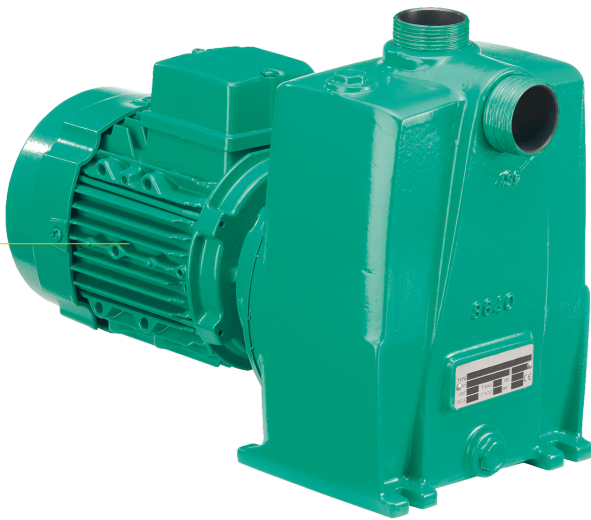
Pump curves



Dimensions and dimensions drawings

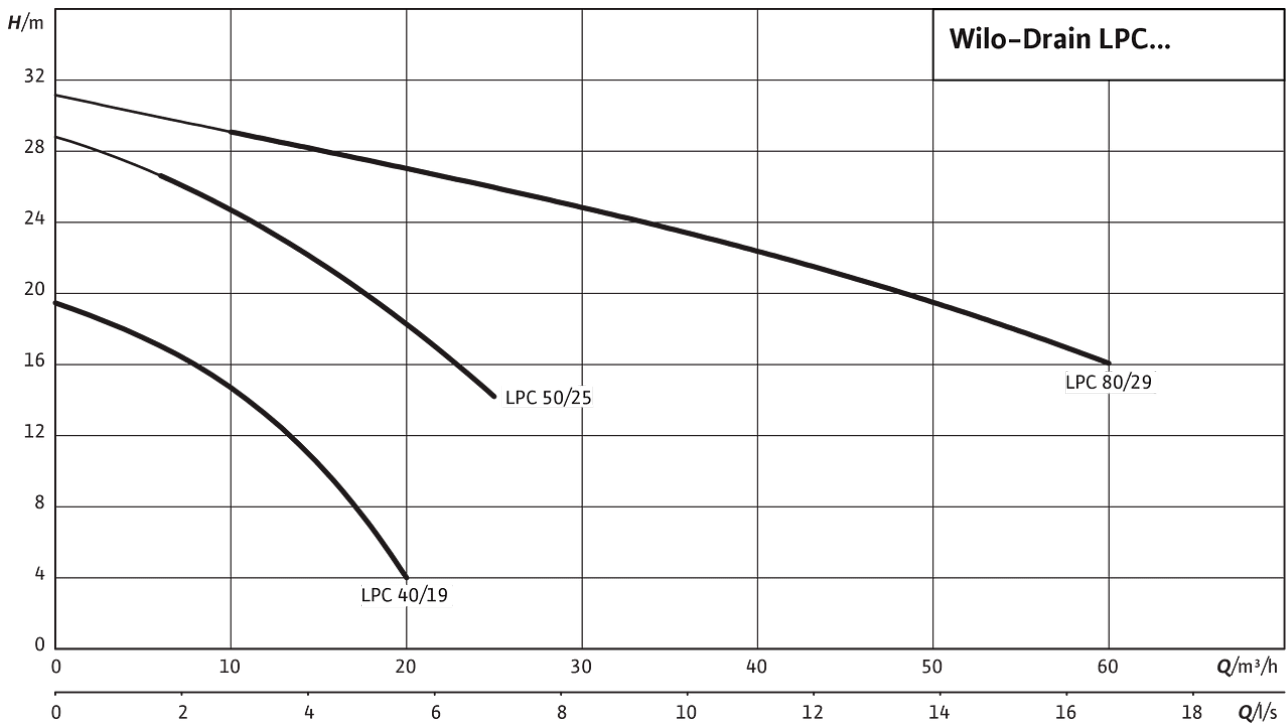
Wilo-Drain LP 40/10





Your advantages

- > Long service life thanks to its robust construction in grey cast iron
- > Easy maintenance due to integrated inspection opening
- > Flexible application



Construction

Self-priming drainage pump with standard motor for dry well installation

Application

Pumping of

- > Wastewater
- > Process water

Equipment/function

NO VALUE

Scope of delivery

- > Pump
- > Installation and operating instructions

Your advantages

- > Long service life thanks to its robust construction in grey cast iron
- > Easy maintenance due to integrated inspection opening
- > Flexible application

Construction

Self-priming drainage pump with standard motor for dry well installation

Application

Pumping of

- > Wastewater
- > Process water

Equipment/function

NO VALUE

Scope of delivery

- > Pump
- > Installation and operating instructions

our advantages

- > Long service life thanks to its robust construction in pre-cast iron
- > Easy maintenance due to integral inspection opening
- > Flexible application

Construction

Self-priming rainwater pump with standard motor or variable speed drive

Application

Pump for

- > Wastewater
- > Process water

Equipment/function

NO VAL

Scope of delivery

- > Pump
- > Installation and operating instructions



our advantages

- > 32+17) 6- ') P*) P 2/ 7P3 P87 P3&978
' 327889' 832 P2 P-6) =P P78 P632
- > P7=P P 28 2%2') P 9) P3 P28 +6%8 (P274) ' 832
34) 2-2+
- > 0 <8Q P/440' P832

Construction

) 0A46-1 -2+P(6%2%+) P491 4P -8 P78/2(%6(P 3886P36P(6=
;) 0P278/0P832

Application

- 91 4-2+P*
- > P78 ; P8 6
- > 63') 77P P8 6

equipment/function

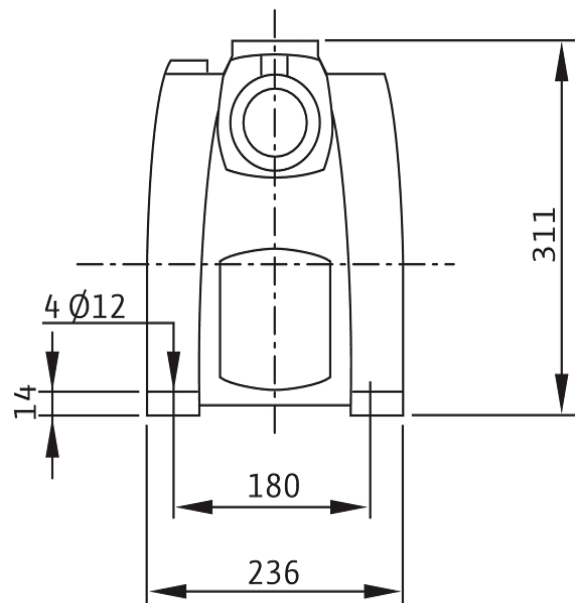
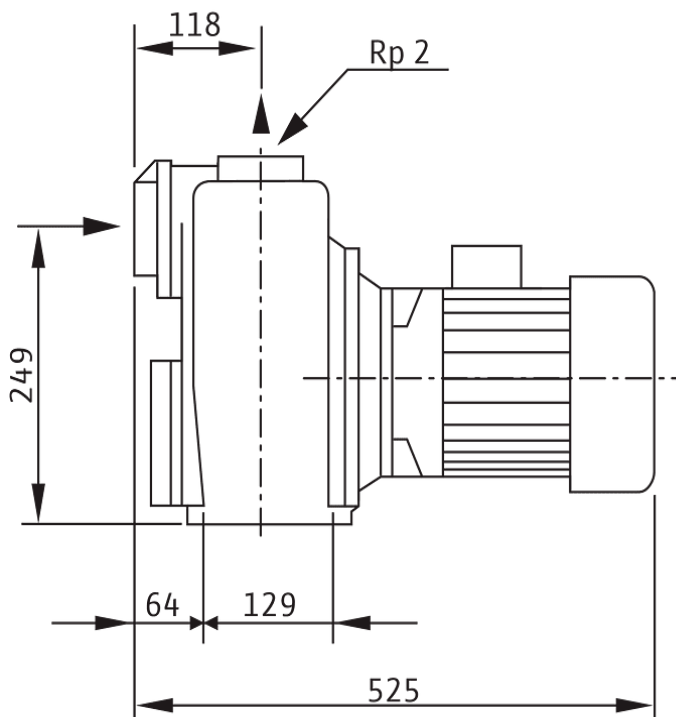
P

Scope of delivery

- > 91 4
- > 278/0P832 P/2(P4) 6%82+P27889' 8327

our advantages

- > 32+7) 6-') P*) P 2/ 7P3 P87 P3&978
' 327889' 832 P2 P-6) =P P78 P632
- > P7=P P 28 2%2') P 9) P3 P28 +6%6 (P274) ' 832
34) 2-2+
- > 0 <80 P/440' P832



Construction

) 0Ä46-1 -2+P (6%2%+) P491 4P -8 P78/2 (%6(P 3886P36P (6-
;) 0P278/00832

Application

- 91 4-2+P*
- > P78 ; P6
 - > 63') 77P P6

equipment/function

P

Scope of delivery

- > 91 4
- > 278/00832 P/2 (P4) 6%82+P27889' 8327

our advantages

- > Long service life thanks to its robust construction in pre-cast iron
- > Easy maintenance due to integral inspection opening
- > Flexible application

Construction

Self-priming rainwater pump with standard motor or variable speed drive

Application

Pump for

- > Wastewater
- > Process water

Equipment/function

NO VAL

Scope of delivery

- > Pump
- > Installation and operating instructions



our advantages

- > 32+17) 6-') 13*) 13 %2/ 7133 1187 13&978
' 327889' 8321211-6) =11 %7811632
- > %7=11 %28 2%2') 11 9) 133128 +6%8 (11274) ' 832
34) 2-2+
- > 0 <-80 11/440' %832

Construction

) 0146-1 -2+11 6%2%+) 11491 411 -8 1178/2(%6(11 3886113611 6=
;) 011278/00832

Application

- 91 4-2+11*
- > %78 ; %8) 6
- > 63') 7711 %8) 6

equipment/function

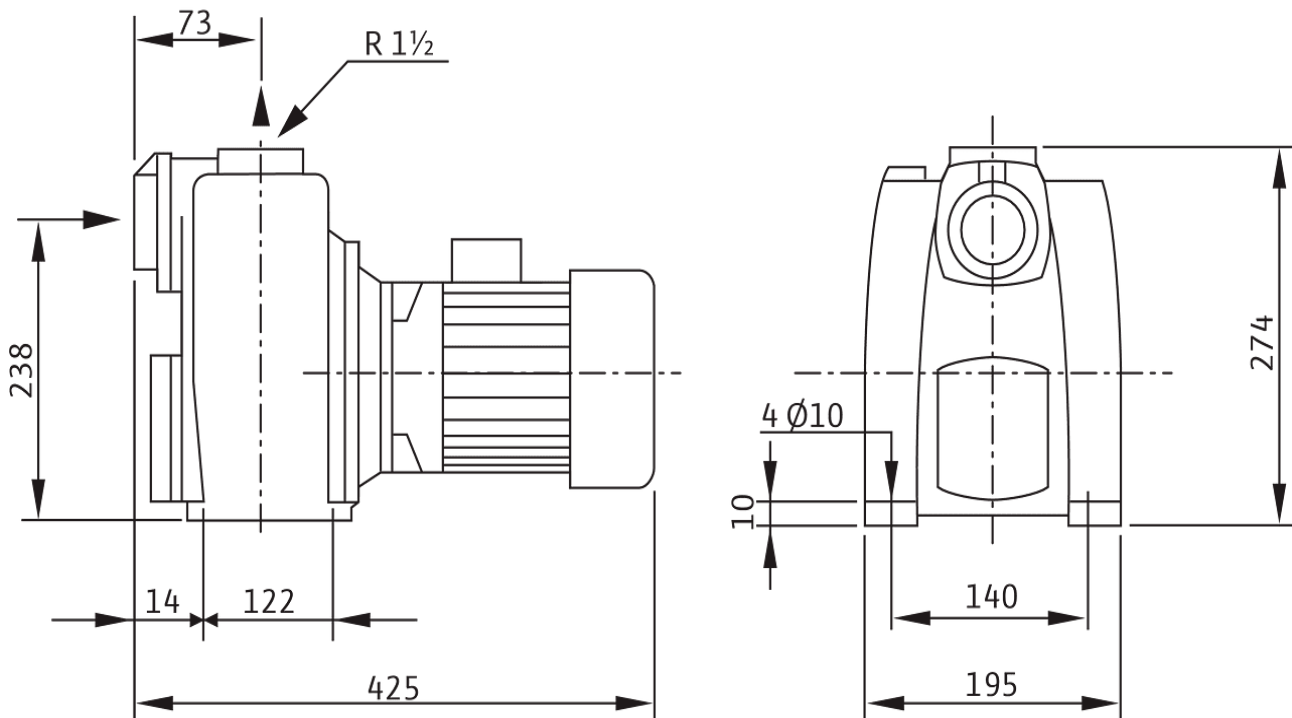
11

Scope of delivery

- > 91 4
- > 278/0083211/2(1134) 6%82+1127889' 8327

our advantages

- > 32+17) 6-') 13*) 13 2/ 713 1187 13&978
' 327889' 8321211-6) =1 17811632
- > 17=11 228 222') 1 9) 13128 +618) (1274) ' 832
34) 2-2+
- > 0 <80 11440' 1832



Construction

) 046-1 -2+1 (6%2%) 1491 411 -8 178/2 (16(11 38811361(6-
;) 11278/11832

Application

- 91 4-2+13*
- > 178; 18) 6
 - > 63') 771 18) 6

equipment/function

1

Scope of delivery

- > 91 4
- > 278/1183212(134) 6182+127889' 8327

our advantages

- > Long service life thanks to its robust construction in pre-cast iron
- > Easy maintenance due to integral inspection opening
- > Flexible application

Construction

Self-priming rainwater pump with standard motor or variable speed drive

Application

Pump for

- > Wastewater
- > Process water

Equipment/function

NO VAL

Scope of delivery

- > Pump
- > Installation and operating instructions



our advantages

- > 32+17) 6-') 13*) 13 %2/ 7133 1187 13&978
' 327889' 8321211-6) =11 %7811632
- > %7=11 %28 2%2') 11 9) 133128 +6%8 (11274) ' 832
34) 2-2+
- > 0 <-80 11/440' %832

Construction

) 0146-1 -2+11 6%2%+) 11491 411 -8 1178/2(%6(11 3886113611 6=
;) 011278/00832

Application

- 91 4-2+11*
- > %78 ; %8) 6
 - > 63') 7711 %8) 6

equipment/function

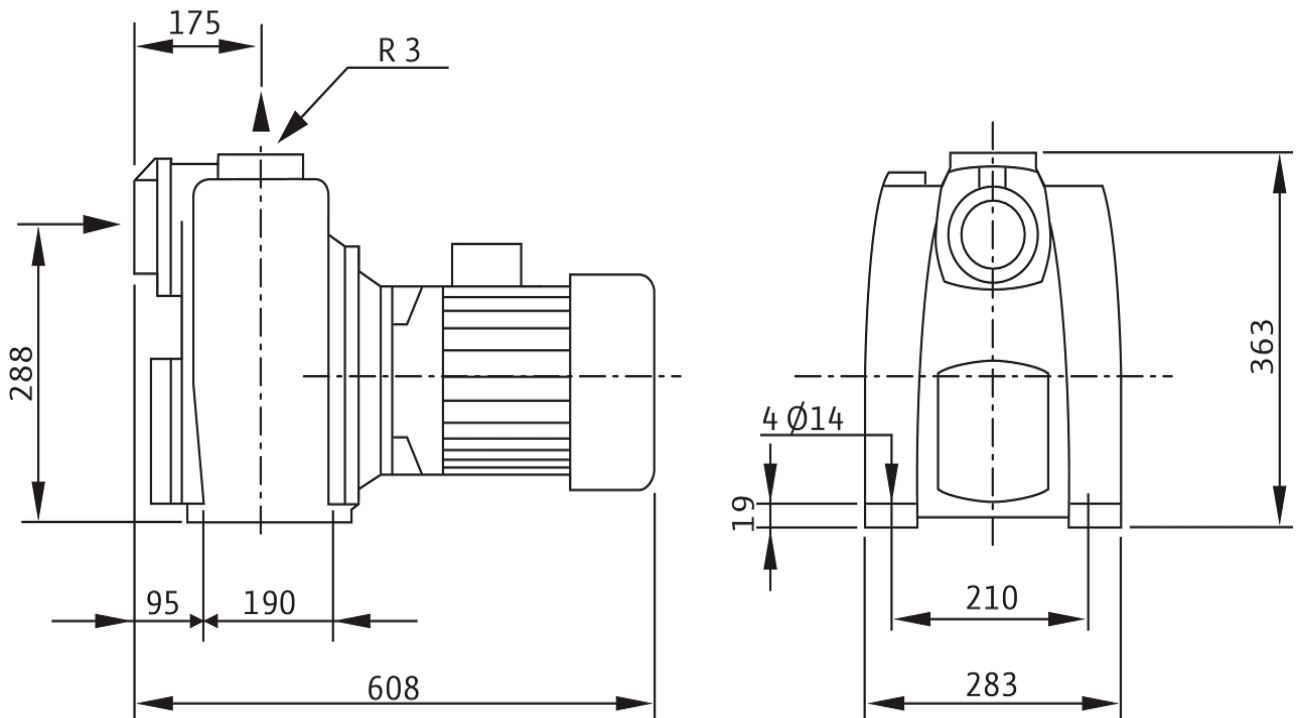
11

Scope of delivery

- > 91 4
- > 278/0083211/2(1134) 6%82+1127889' 8327

our advantages

- > 32+17) 6-') 13*) 13 2/ 7133 1187 13&978
' 327889' 83211211-6) =11 17811632
- > 17=11 228 222') 11 9) 131128 +618) (11274) ' 832
34) 2-2+
- > 0 <80 11440' 1832



Construction

) 0146-1 -2+11 6%2%+) 11491 411 -8 1182(116(11 388113611 6-
;) 011278/00832

Application

- 91 4-2+11*
- > 178; 18) 6
 - > 63') 771 18) 6

equipment/function

11

Scope of delivery

- > 91 4
- > 278/00832112(114) 6182+1127889' 8327